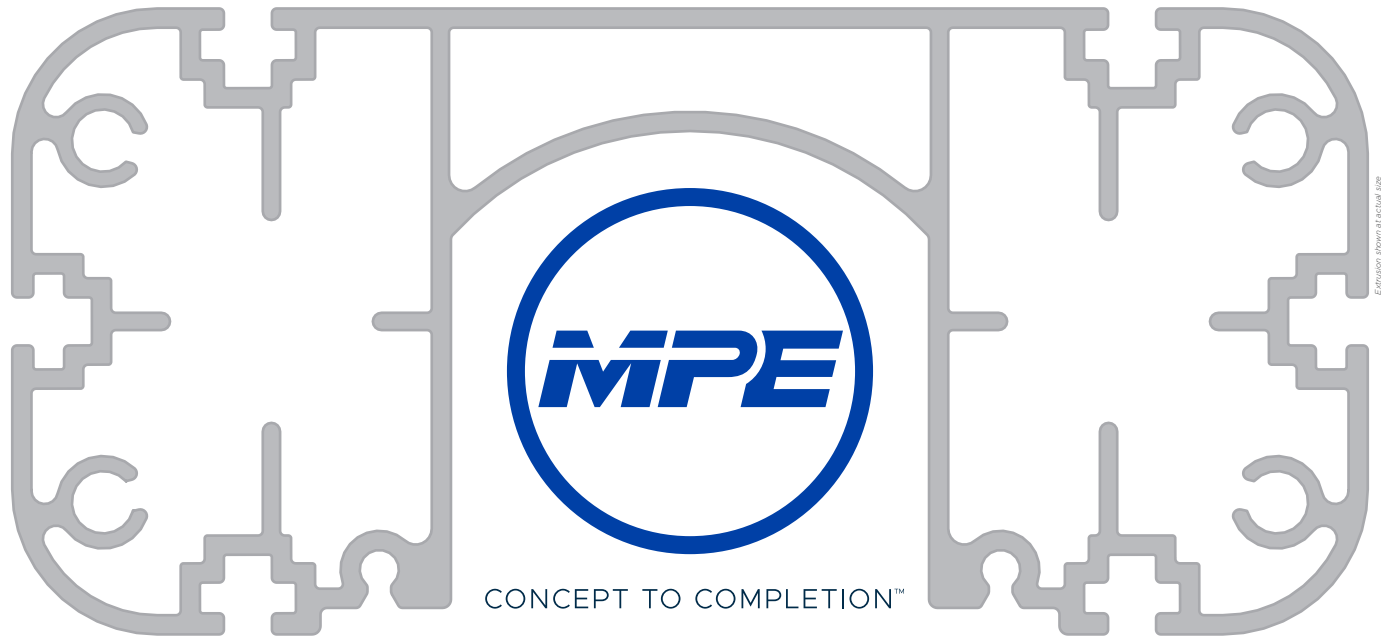




MODULAR | ADAPTABLE | CUSTOMIZABLE
for HEALTHCARE



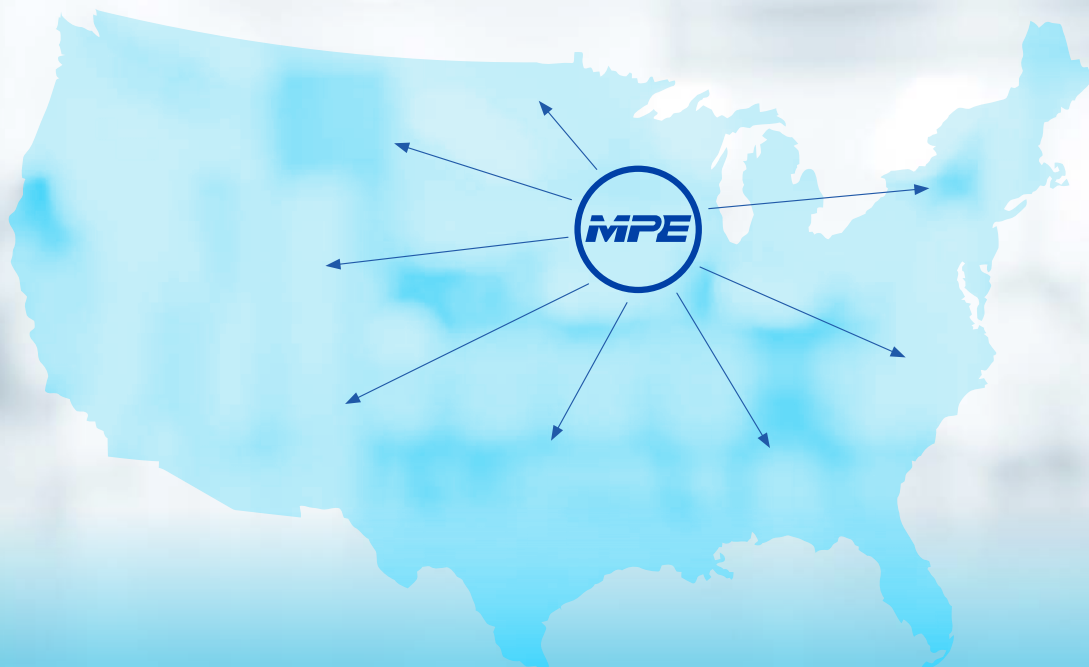
www.mpe-inc.com | 1-800-266-1687 | sales@mpe-inc.com
10597 W. Glenbrook Ct. Milwaukee, WI 53224 | 414-355-0310



*SUPERIOR DESIGN • HIGHEST STANDARDS
ROBUST CONSTRUCTION • NEVER COMPROMISE*



LARGEST CUSTOM MEDICAL CART MANUFACTURER IN THE USA!



LOWER COST | LOWER RISK | FASTER TIME TO MARKET



CORPORATE LEVEL

BUSINESS LEVEL



SERVICE LEVEL

Mechanical Engineering
Industrial Design
Human Factors
Systems Engineering
Program Management
Regulatory Compliance
Dfx - Design for
Excellence

Custom Component
Fabrication
Powder Coating
Silk Screening
Sub-Assemblies

High Level Assemblies
Complete System
Assemblies
ISO 5 Controlled
Environment Cell

Custom Medical Carts
MACH - Off Shelf Medical
Cart components

Quick Turn Proto Services
Proof-of-Concept
validation
Prototype Development



About MPE:

MPE-Inc is a leading design and manufacturing partner to healthcare and technology OEMs, leveraging core competencies in product design and engineering, high mix / low volume manufacturing, quality systems and 3PL services. For more than 40 years, MPE has successfully serviced an impressive list of blue-chip medical device and technology OEMs, leveraging a vertically integrated business model that offers its growing customer base “Concept to Completion” solutions. MPE-INC is headquartered in Milwaukee.



Program Overview Outline

We believe every life enhancing medical technology should never sacrifice clinical utility and workflow compatibility in the procedure room and other critical points of care. In addition, medical device OEMs are faced with constrained resources, increasing costs, and time to market pressures. Developing custom medical device carts are an expensive and lengthy process often thought of late in the product development process. Yet they are integral of the clinician and patient experience.

MPE, the largest custom medical cart manufacturer has rethought the value stream necessary to commercialize and mobilize medical science. We have added to our full suite of engineering and manufacturing services by offering a broad set of modular components that can be leveraged for medical device cart design that deliver OEM's lower cost, lower risk and faster time to market.

Introducing MPE's all new MACH Series

Modular in architecture

- Tooled modular components to create unique cart configurations
- Wide array of accessories to support your specific workflow
- Unlimited configurations accommodate >95% of medical devices

Adaptable to your medical workflow

- Built for medical devices used in the procedure room & other critical points of care
- Optimized for human factors and ergonomics
- Designed in collaboration with medical professionals to optimize wide array of medical workflows

Customizable so you don't compromise

- Leverage MPE's design and engineering team for your custom needs
- In-house fabrication, sourcing and assembly of your custom components
- Custom powder coating to maintain your brand integrity
- Screen print your logo, graphics or instructional information

Healthcare focused

- Leveraging 40+ years of healthcare design experience
- Hygienic design for easy cleaning and infection prevention
- Designed for clinically-relevant support of medical device setup and usage, and for efficient storage and transport
- Meets applicable medical regulatory standards

MACH PRO

Superior Cable Management • Robust construction for heavier devices & demanding workflows • Greatest variety of options & accessories



MACH 1

Single Column

MACH 2

Dual Column

MACH E

Expandable Custom Width

MACH ECO

Lightweight & small footprint • For smaller devices • Most economical solution



MACH L

Lite Base

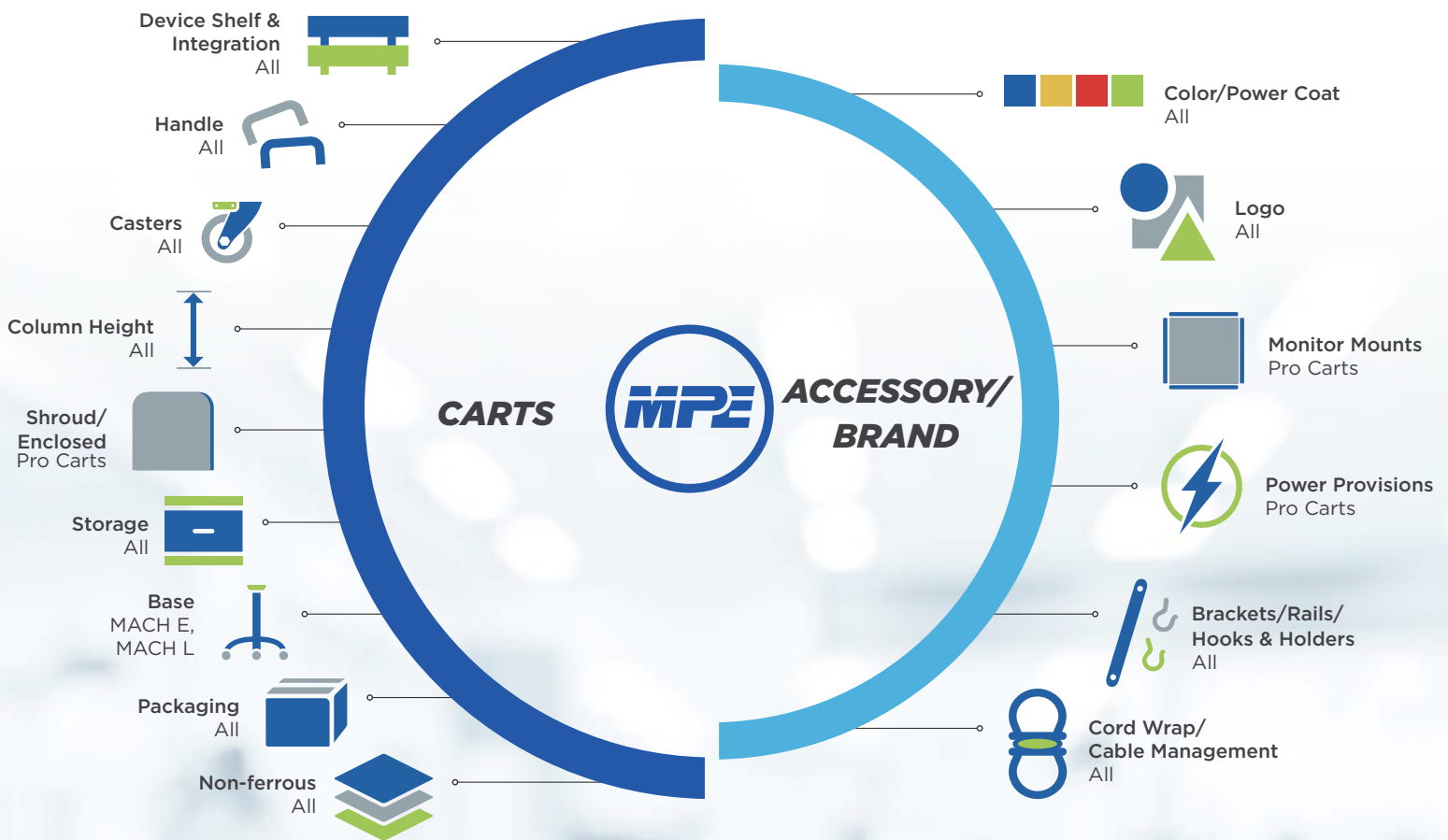
MACH R

Roll Stand



CUSTOMIZATION - Leverage MPE for exactly what you need

MPE is the largest custom cart manufacturer in the USA. We have vertically integrated product development and design, fabrication, sourcing and inventory management services. The modular aspect of the MACH series provides a diverse foundation for a variety of workflow needs. Our customization service goes further to provide the exact solution you need for your business, device and brand.





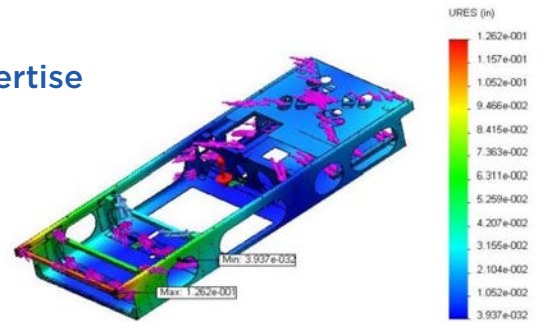
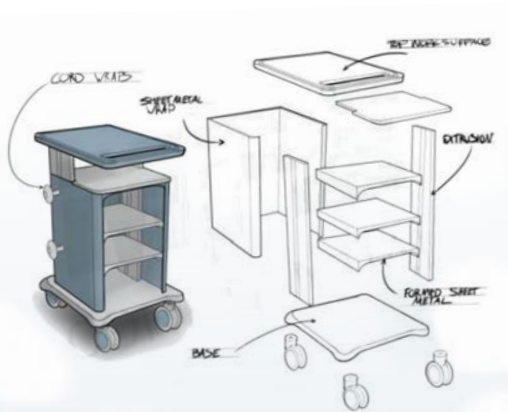
CUSTOMIZATION - Leverage MPE for exactly what you need

MPE is the largest custom cart manufacturer in the USA. We have vertically integrated product development and design, fabrication, sourcing and inventory management services. The modular aspect of the MACH series provides a diverse foundation for a variety of workflow needs. Our customization service goes further to provide the exact solution you need for your business, device and brand.

Utilize our Product Development and Manufacturing Expertise

Limitless design possibilities to realize your unique device requirements, brand strategy, workflow, or use case. Our expertise encompasses:

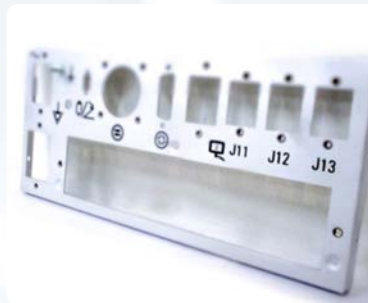
- Industrial Design
- Human Factor Analysis
- Design Engineering
- Custom Fabrication
- Global Sourcing



Maintain Your Brand Integrity

Never sacrifice the brand recognition that you have carefully cultivated. Our in-house capabilities can customize the look and branding of your device.

- Screen printing for logos, callouts and other design features
- Durable, medical-grade powder coating for custom colors and textures.



Customize your business model

MPE's Concept to Completion model aligns to your business needs and manages the product life cycle as it evolves to your changing needs.

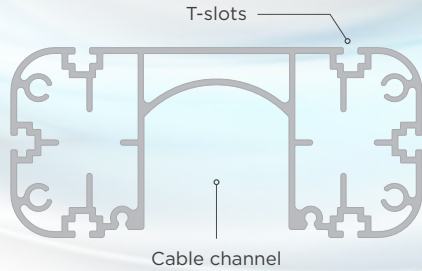
- Project management of custom configurations
- Final integration and test of complete product ship directly to end user 3PL service;
 - Custom packaging to ship products knocked down or fully assembled
 - Efficient international shipping options





PRO CARTS

The Pro Carts are high quality, robust medical device carts designed to handle extreme working conditions in the procedure room, as well other demanding clinical workflows. The Pro series includes a multitude of modular components that accommodate more than 95% of medical devices and their associated equipment. These carts also include design features so that MPE can easily customize the carts to meet your specific needs and look.



Superior cable management

- Largest cable channel in the industry
- Cable routing without tools or disassembly
- Optional integrated power strip
- Customizable to carry power supply

Greatest variety of modular components and customization

Modular Components

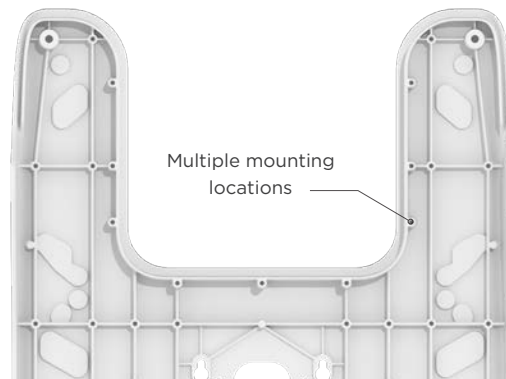
- Storage:** Drawers / Shelves / Baskets
- Clinical Support:** IV poles / Tank brackets / Equipment mounting rails
- Workflow:** Handles / Cable wraps / Casters
- Technology Support:** Monitor arms / Integrated power strip

Robust design for heavier devices and critical workflows

- Extruded and cast aluminum components
- High payload capacity
- Made with high grade die cast aluminum with a medical grade powder coat finish for high durability and wear resistance
- Multiple mounting locations offer design flexibility for accessories and custom items

Customizable

- T-slots for attaching custom components
- Cast holes to create attachment points
- Base customization for power supply & battery
- MACH-E has customizable width
- Powder coat color
- Branding
- MPE design team can create any possibility!



MODULAR | ADAPTABLE | CUSTOMIZABLE | FOR HEALTHCARE

www.mpe-inc.com | 1-800-266-1687 | mach@mpe-inc.com
10597 W. Glenbrook Ct. Milwaukee, WI 53224 | 414-355-0310



SINGLE COLUMN

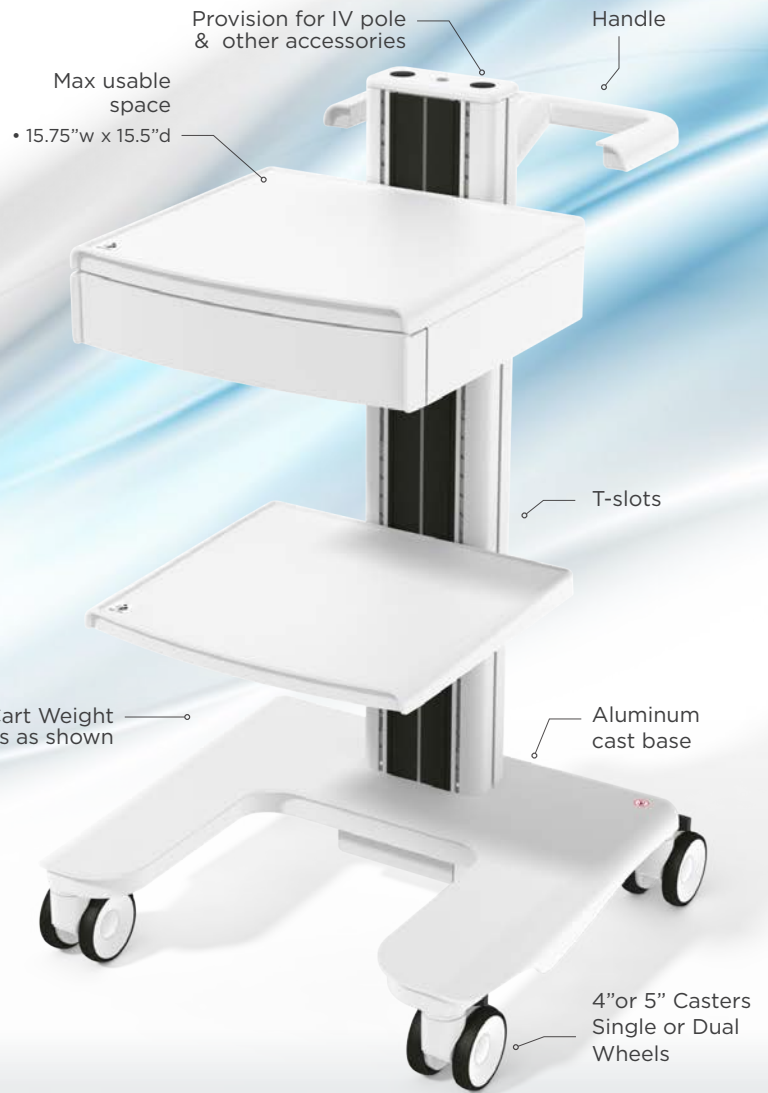
FEATURES & BENEFITS:

- Modern, refined architecture for light to medium sized medical devices and elegant configurations
- Single column design creates a flexible platform for efficient workflows
- Modular components and custom options provide versatility
- Zero compromise in workflow compatibility, clinical utility and branding
- Superior cable management

APPLICATIONS:

Ventilation, Ultrasound, Diagnostic, Cardiology

Common Configuration & Customization:



MAX LOADS

SHELF	DRAWER	CART



MODULAR | ADAPTABLE | CUSTOMIZABLE | FOR HEALTHCARE

www.mpe-inc.com | 1-800-266-1687 | mach@mpe-inc.com
10597 W. Glenbrook Ct. Milwaukee, WI 53224 | 414-355-0310



DUAL COLUMN

FEATURES & BENEFITS:

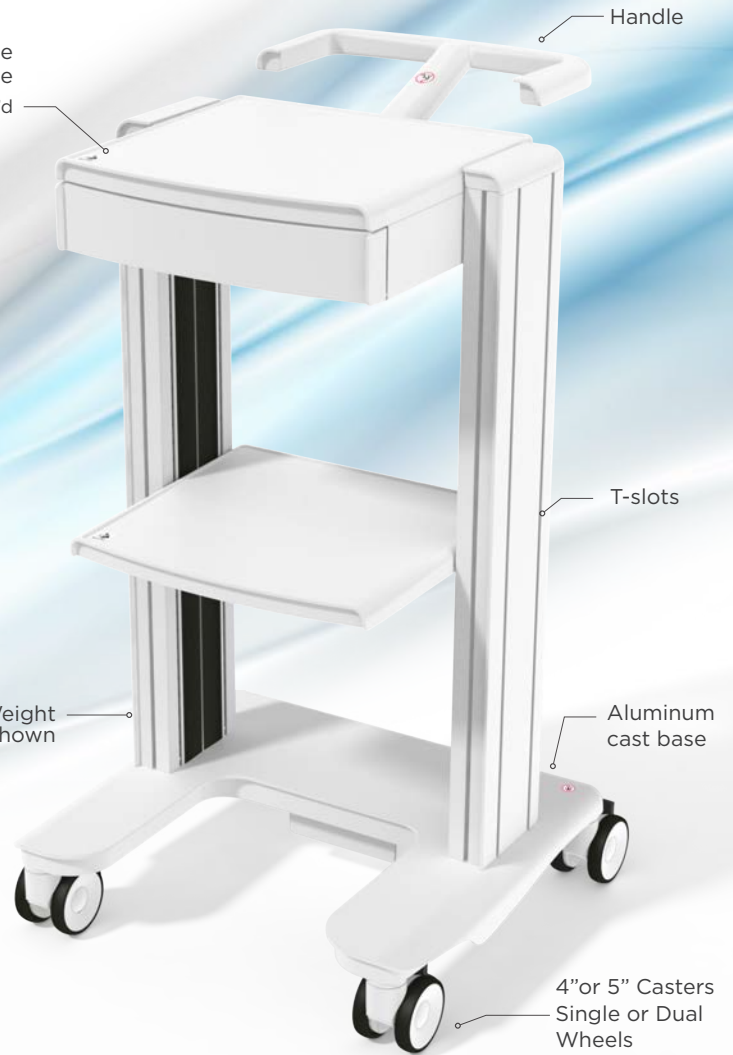
- Modern, refined architecture for heavier medical devices and complex configurations
- Dual column design accommodates numerous devices, equipment and accessories
- Modular components and custom options provide versatility
- Zero compromise in workflow compatibility, clinical utility and branding
- Superior cable management

APPLICATIONS:

Endoscopy, Surgical Equipment

Common Configuration & Customization:

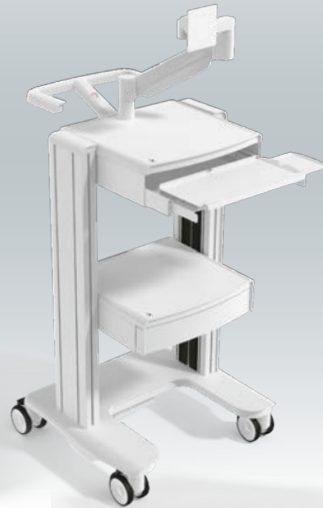
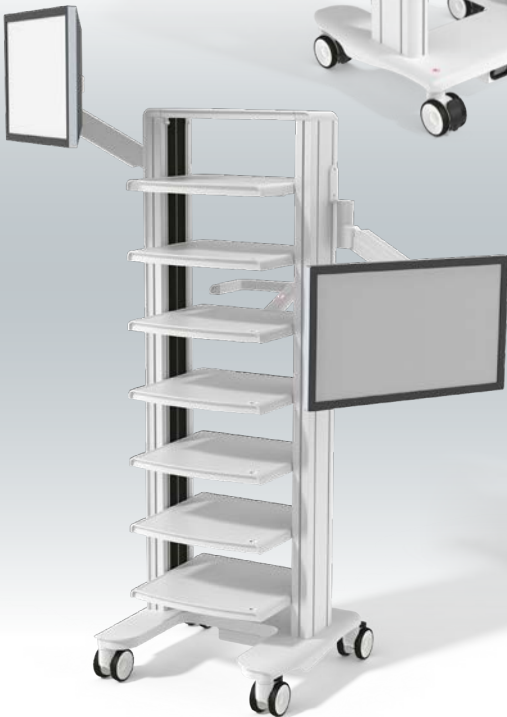
Max usable space
• 15.75" w x 16.5" d



Integrated power box & 4 plug strip

MAX LOADS

SHELF	DRAWER	CART



MODULAR | ADAPTABLE | CUSTOMIZABLE | FOR HEALTHCARE

www.mpe-inc.com | 1-800-266-1687 | mach@mpe-inc.com
10597 W. Glenbrook Ct. Milwaukee, WI 53224 | 414-355-0310



EXPANDABLE CUSTOM WIDTH

FEATURES & BENEFITS:

- Custom width accommodates unique size medical device and configurations
- Dual column design accommodates numerous devices, equipment and accessories
- Modular components and custom options provide versatility
- Zero compromise in workflow compatibility, clinical utility and branding
- Superior cable management

APPLICATIONS:

Imaging, Surgical Equipment

Common Configuration & Customization:

Customize shelf width to your needs

Handle

T-slots

Cart Weight
78 lbs as shown

Aluminum
cast base
legs

Customize width
to your needs

4" or 5" Casters
Single or Dual
Wheels



MAX LOADS

SHELF	DRAWER	CART



MODULAR | ADAPTABLE | CUSTOMIZABLE | FOR HEALTHCARE

www.mpe-inc.com | 1-800-266-1687 | mach@mpe-inc.com
10597 W. Glenbrook Ct. Milwaukee, WI 53224 | 414-355-0310



ECO CARTS

The Eco Series was designed to offer quality and robustness at an economical price. Like the Pro Series, Eco can handle extreme working conditions in the procedure room, as

well other demanding clinical workflows with accessories. These carts also include design features so MPE can easily customize the carts to meet your specific needs and look.



Quality & robustness at an economic price

- Extruded and cast aluminum components
- Made with high grade cast aluminum with a medical grade powder coat finish for high durability and wear resistance
- Multiple mounting locations offer design flexibility for accessories and custom items

Modular components and custom options available

Modular Components

Storage: Shelves / Baskets

Clinical Support: Tank brackets / Equipment mounting rails

Workflow: Handles / Cable wraps / Casters

Customizable

T-slots for attaching custom components

Device shelf

Handles

Various mounting brackets

Custom sheet metal base

MPE design team can create any possibility!

MODULAR | ADAPTABLE | CUSTOMIZABLE | FOR HEALTHCARE

www.mpe-inc.com | 1-800-266-1687 | mach@mpe-inc.com
10597 W. Glenbrook Ct. Milwaukee, WI 53224 | 414-355-0310



LITE CART

FEATURES & BENEFITS:

- Robust and versatile architecture in a cost effective package
- Multiple base options available:
 - Die cast aluminum base for high demand application
 - Customizable fabricated base offers flexibility at lower cost
- Accessories and custom options provide additional flexibility and versatility
- Zero compromise in workflow compatibility, clinical utility and branding

APPLICATIONS:

Ventilation, Diagnostic, Cardiology



Base Options:



Cast Aluminum



Sheet Metal

MAX LOADS

SHELF	CART

Customization Examples:



MODULAR | ADAPTABLE | CUSTOMIZABLE | FOR HEALTHCARE

www.mpe-inc.com | 1-800-266-1687 | mach@mpe-inc.com
10597 W. Glenbrook Ct. Milwaukee, WI 53224 | 414-355-0310



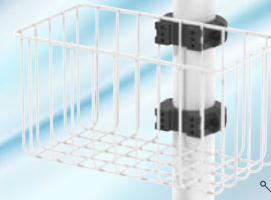
ROLL STAND

FEATURES & BENEFITS:

- Designed to simplify medical equipment transportation
- Reduced footprint & improved maneuverability
- Accommodates a wide selection of small to medium size medical devices and configurations
- Medical grade 5" dual casters

Customizable shelf options

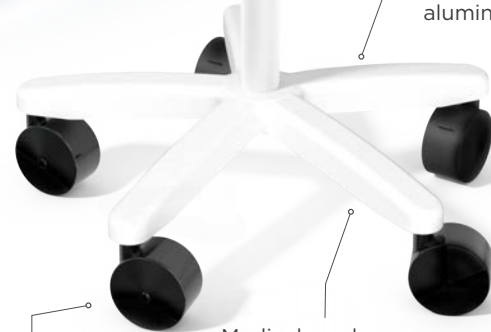
Handle



Wire basket

Cart Weight
20 lbs as shown

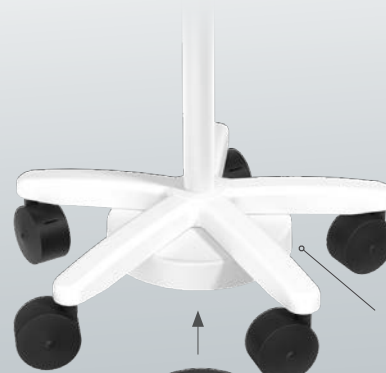
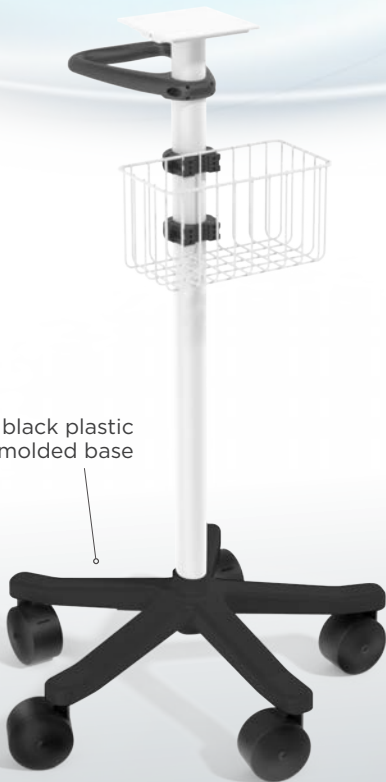
Die cast
aluminum



5" dual casters

Medical grade
powder coat

Optional black plastic
molded base



Counter weight
cover

Counter weight
ballast option

MODULAR | ADAPTABLE | CUSTOMIZABLE | FOR HEALTHCARE

www.mpe-inc.com | 1-800-266-1687 | mach@mpe-inc.com
10597 W. Glenbrook Ct. Milwaukee, WI 53224 | 414-355-0310



ACCESSORIES



MONITOR ARMS

Support monitors of various sizes, orientations and with different options for built in keyboard tray and dual arm capabilities. Capable of articulating in various heights and positions to accommodate necessary procedural workflows. Easy repositioning with one hand for maximum flexibility and ergonomic comfort. Monitor arms fold to limit space during travel or storage.

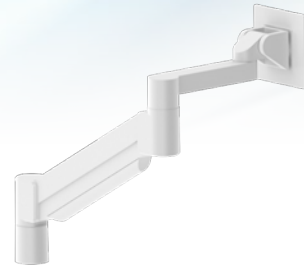
SPECIFICATIONS:



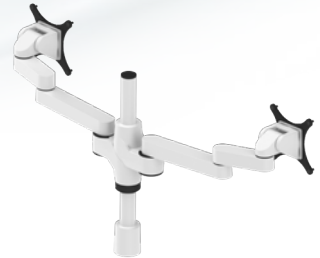
Single Monitor Post



Single Monitor Short



Single Monitor Standard



Monitor Arm Dual

Max Extension Range					
Vertical:	5.30"	9.5"	16"	5.3	
Horizontal:	N/A	19.75"	24"	26"	
Load Capacity:	Supports up to 30lbs (13.6 kg) monitor	Supports 10-23 lb (4.5-10.4 kg) monitor	Supports 7.5-25lb (3.4-11.3 kg) monitor	Supports 20lb (9.0 kg) monitor	
Finishes	Flat White	Flat White	Flat White	Flat White	
VESA Compatibility	75mm & 100mm VESA adapters included	75mm & 100mm VESA adapters included	75mm & 100mm VESA adapters included	75mm & 100mm VESA adapters included	

	PART NUMBER	M-1	M-2	M-E	M-L	M-R
Monitor Arm, Single Monitor Post	23563-926	✓	✓	✓		
Monitor Arm, Single Monitor Short	23564-613	✓	✓	✓		
Monitor Arm, Single Monitor Standard	23563-780	✓	✓	✓		
Monitor Arm, Dual	23563-914	✓	✓	✓		

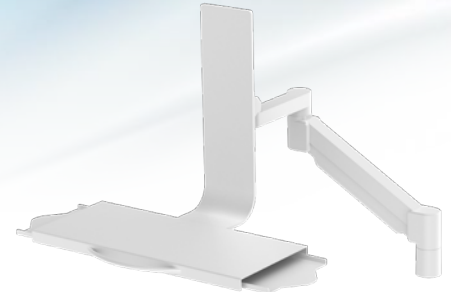
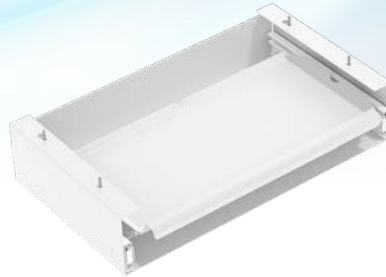
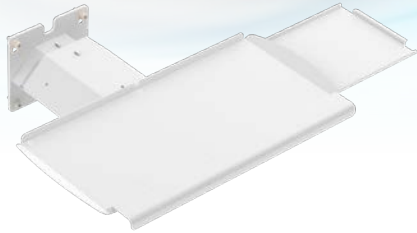
MODULAR | ADAPTABLE | CUSTOMIZABLE | FOR HEALTHCARE

www.mpe-inc.com | 1-800-266-1687 | mach@mpe-inc.com
 10597 W. Glenbrook Ct. Milwaukee, WI 53224 | 414-355-0310



KEYBOARD TRAY OPTIONS

The keyboard tray can accommodate various keyboard sizes. Its designed with formed in wrist support for ergonomic advantages. Choose from direct mount, under shelf, and monitor arm mount options that best fit your needs.



Keyboard Tray

Physical Dimensions:	17.1" W x 16.20" D x 5" H
Usable Space:	15.50"W x 7.00" D
Load Capacity:	10 lbs
Material:	Steel
Finish:	Powder coat
Assembly:	Direct mount to column

Keyboard Tray Undermount

Physical Dimensions:	17.5" W x 10.8" D x 3.7" H
Usable Space:	15.00" W x 7.00" D
Load Capacity:	10 lbs
Material:	Steel
Finish:	Powder coat
Assembly:	Direct mount under shelf

Single Monitor w/ Keyboard Tray

Physical Dimensions:	17.3" W x 4.5" D x 7.3" H
Vertical Range:	18"
Horizontal Range:	27"
Supports:	6-23lb (2.7-10.4 kg) monitor
Finish:	Powder coat
Assembly:	Attaches to column

	PART NUMBER	M-1	M-2	M-E	M-L	M-R
Keyboard Tray	1906161	✓				
Keyboard Tray Undermount	1907031	✓	✓	✓		
Monitor Arm, Single w/Keyboard Tray	23563-782	✓	✓	✓		

MODULAR | ADAPTABLE | CUSTOMIZABLE | FOR HEALTHCARE

www.mpe-inc.com | 1-800-266-1687 | mach@mpe-inc.com
10597 W. Glenbrook Ct. Milwaukee, WI 53224 | 414-355-0310



MONITOR MOUNT BRACKET SINGLE

Single Monitor Post creates a simple secure attachment point for a monitor on top of the column. The post has one rotation point for adjusting the display at different angles and can be extended at heights within a 5.3" range for optimizing usability.

SPECIFICATIONS:

Physical Dimensions:

Single: 2.7" W x 4.25" H

Load Capacity: Supports up to 30lbs (13.6 kg)
50" & under monitor

Materials: Aluminum

Finishes: Flat White

Assembly: Attached to side of column



MONITOR MOUNT BRACKET DUAL

Monitor Mount Bracket secures post to the side of the column.

SPECIFICATIONS:

Physical Dimensions:

Dual: 2.5" W x 2.7" H

Load Capacity: Supports up to 30lbs (13.6 kg)
50" & under monitor

Materials: Aluminum

Finishes: Flat White

Assembly: Attached to side of column



	PART NUMBER	M-1	M-2	M-E	M-L	M-R
Monitor Bracket, Single	1911105	✓	✓			
Monitor Bracket, Dual	1904117F	✓	✓			

MODULAR | ADAPTABLE | CUSTOMIZABLE | FOR HEALTHCARE

www.mpe-inc.com | 1-800-266-1687 | mach@mpe-inc.com
10597 W. Glenbrook Ct. Milwaukee, WI 53224 | 414-355-0310



BALLAST WEIGHT PLATE KIT

Weight plates added to underside of base create a lower center of gravity to decrease tipping. Some systems may be more at risk to tip due to workflow requiring monitor arms in extended positions. Ballast weight plate kits come in set of 2, 4, and 6. *If there is a concern with tipping, MPE can provide analysis to see if ballast is required.*

SPECIFICATIONS:

- Physical Dimensions:** 7.41"W x 22.00"D
- Assembly:** Attached underside of base
- Weight:** 4.8lbs per plate
28.8 total of 6 plates
- Material:** Steel



	PART NUMBER	M-1	M-2	M-E	M-L	M-R
2 Plate Kit	1911115	✓	✓			
4 Plate Kit	1911114	✓	✓			
6 Plate Kit	1905181	✓	✓			

MODULAR | ADAPTABLE | CUSTOMIZABLE | FOR HEALTHCARE

www.mpe-inc.com | 1-800-266-1687 | mach@mpe-inc.com
10597 W. Glenbrook Ct. Milwaukee, WI 53224 | 414-355-0310



BASE SHROUD

Create more shelving space for heavy duty devices or equipment for MACH-1 and MACH-2 configurations with a base shroud that covers the opening in the base. This easily cleanable powder coated surface sits slightly below the top of the base provides a small edge for containment.

SPECIFICATIONS:

Physical Dimensions: 15.94" W x 11.22" D x 1.62" H

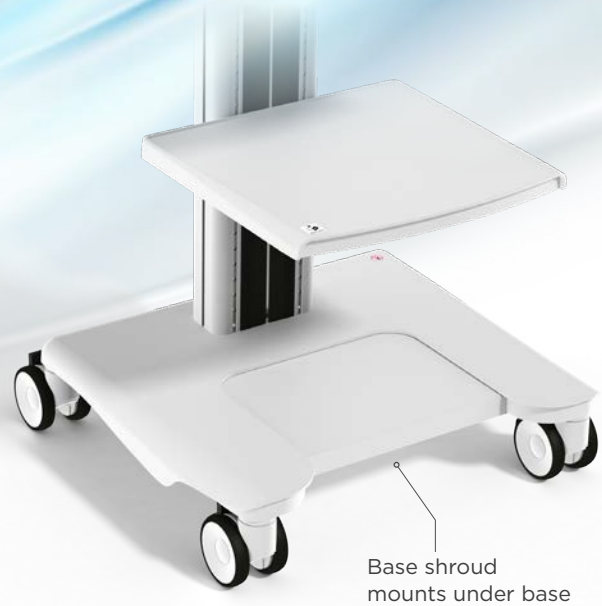
Usable Space Dimensions: 14.18" W x 10.34" D

Material: Steel

Finish: Powder Coat

Assembly: Attached underside of base

Load Capacity: 150 lbs



	PART NUMBER	M-1	M-2	M-E	M-L	M-R
Base Shroud	1911076	✓	✓			

MODULAR | ADAPTABLE | CUSTOMIZABLE | FOR HEALTHCARE

www.mpe-inc.com | 1-800-266-1687 | mach@mpe-inc.com
 10597 W. Glenbrook Ct. Milwaukee, WI 53224 | 414-355-0310



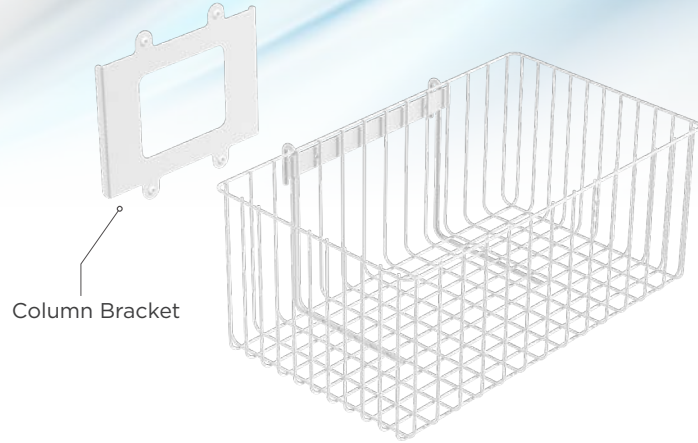
BASKET KITS

Baskets are a common accessory for medical carts used in various healthcare settings. Baskets can be attached to the front and back of cart columns to provide additional storage capacity.

SPECIFICATIONS:

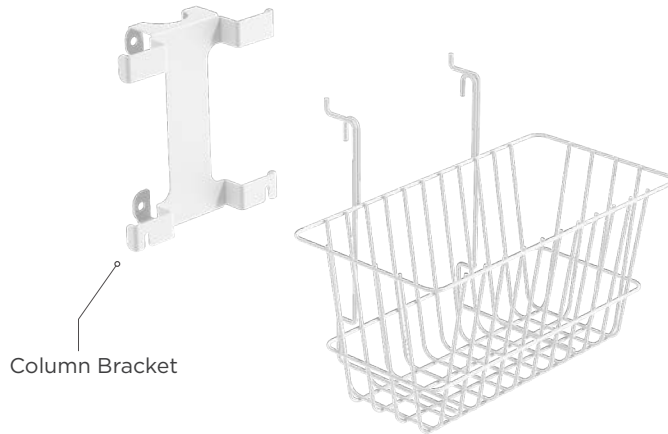
Basket Kit, 19x11x8:

- Storage Dimensions:** 19 "W x 11"D x 8"H
- Material:** Steel wire
- Finish:** Powder coat
- Assembly:** Attached to basket hanger bracket that connects to column



Basket Kit, 12x6x6:

- Storage Dimensions:** 12 "W x 6"D x 6"H
- Material:** Steel wire
- Finish:** Powder coat
- Assembly:** Attached to basket hanger bracket that connects to column



	PART NUMBER	M-1	M-2	M-E	M-L	M-R
Basket Kit 19 x 11 x 18	1911106	✓			✓	
Basket Kit 12 x 6 x 6	1911107				✓	
Basket Kit						✓

MODULAR | ADAPTABLE | CUSTOMIZABLE | FOR HEALTHCARE

www.mpe-inc.com | 1-800-266-1687 | mach@mpe-inc.com
 10597 W. Glenbrook Ct. Milwaukee, WI 53224 | 414-355-0310



BED RAILS

A versatile component, Bed rails can be used for a variety of applications. Mounted to the underside of shelves on either side or front for additional handle locations or clamp mount points for different accessories.

SPECIFICATIONS:

Bed Rail, Single Column:

Load Capacity: 20lbs.

Material: Aluminum

Finish: Clear anodized

Assembly: Attached underneath shelf



Bed Rail, Dual Column:

Load Capacity: 20lbs.

Material: Aluminum

Finish: Clear anodized

Assembly: Attached underneath shelf



	PART NUMBER	M-1	M-2	M-E	M-L	M-R
Bed Rail, Single Column	1911089	✓			✓	
Bed Rail, Dual Column	1911091		✓			

MODULAR | ADAPTABLE | CUSTOMIZABLE | FOR HEALTHCARE

www.mpe-inc.com | 1-800-266-1687 | mach@mpe-inc.com
 10597 W. Glenbrook Ct. Milwaukee, WI 53224 | 414-355-0310



CORD WRAP KIT

A versatile component, cord wraps can be used for a variety of applications.

SPECIFICATIONS:

Cord Wraps 4 Pack:

Physical Dimensions: 2.25" diameter

Material: Polycarbonate

Finish: Colors vary

Assembly: Attach to all sides of column in T-nut slots



	PART NUMBER	M-1	M-2	M-E	M-L	M-R
Cord Wrap Kit	1911094	✓	✓	✓	✓	

MODULAR | ADAPTABLE | CUSTOMIZABLE | FOR HEALTHCARE

www.mpe-inc.com | 1-800-266-1687 | mach@mpe-inc.com
 10597 W. Glenbrook Ct. Milwaukee, WI 53224 | 414-355-0310

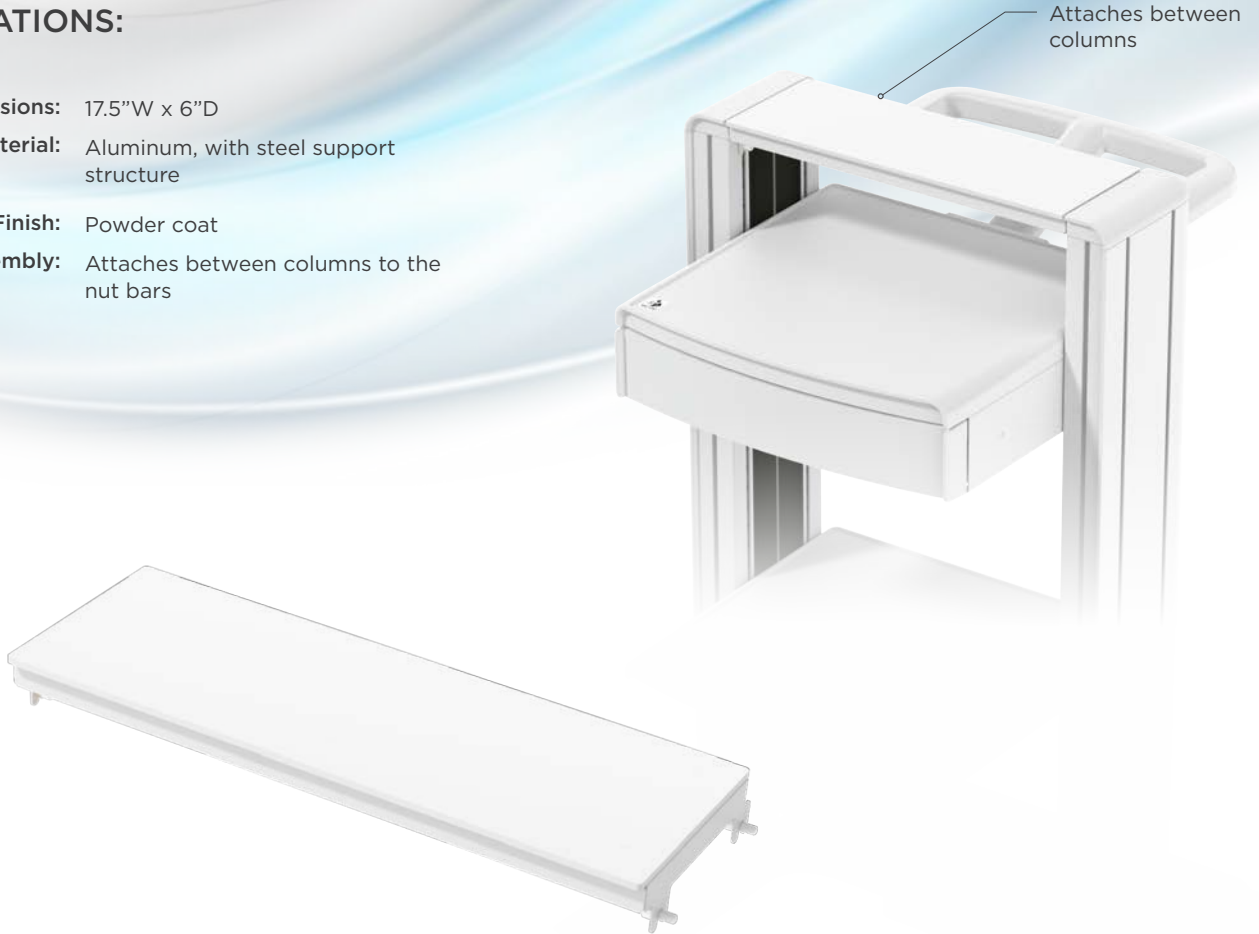


CROSS BAR DUAL COLUMN

The cross bar designed for the MACH-2 creates a bridge connecting the two columns at the top. It serves as a configurable mounting platform for other components, such as a monitor mount that can be fixed along the width of the cross bar. A smooth look that sits flush with the top of the columns.

SPECIFICATIONS:

- Physical Dimensions:** 17.5"W x 6"D
- Material:** Aluminum, with steel support structure
- Finish:** Powder coat
- Assembly:** Attaches between columns to the nut bars



	PART NUMBER	M-1	M-2	M-E	M-L	M-R
Cross Bar Dual Column	1911077		✓			

MODULAR | ADAPTABLE | CUSTOMIZABLE | FOR HEALTHCARE

www.mpe-inc.com | 1-800-266-1687 | mach@mpe-inc.com
 10597 W. Glenbrook Ct. Milwaukee, WI 53224 | 414-355-0310



FOOT SWITCH BRACKET

Foot switch brackets are universal storage holders for foot switch devices. Attaching in open slots along the length of the column.

SPECIFICATIONS:

Foot Switch, Single Column:

Physical Dimensions: 5.96"W x 2.63"D x 3.97"H

Material: Steel

Assembly: Attached to column T-Nut slots



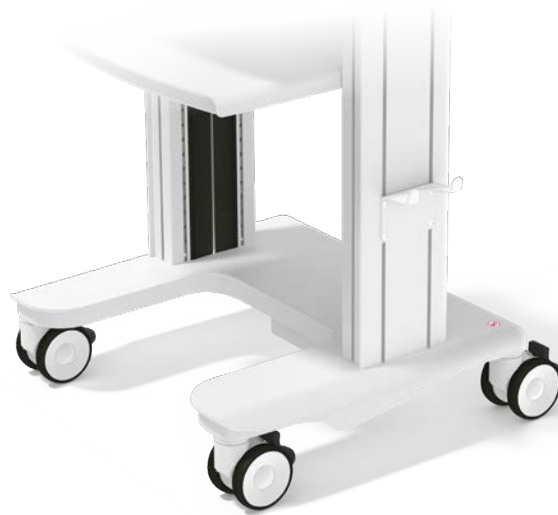
Foot Switch, Dual Column:

Physical Dimensions: 4.00"W x 2.63"D x 3.97"H

Material: Steel

Finish: Powder coat

Assembly: Attached to column T-Nut slots



	PART NUMBER	M-1	M-2	M-E	M-L	M-R
Foot Switch Kit, Single Column	1911083	✓				
Foot Switch Kit, Dual Column	1911085		✓	✓		

MODULAR | ADAPTABLE | CUSTOMIZABLE | FOR HEALTHCARE

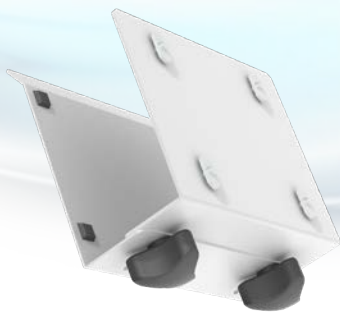
www.mpe-inc.com | 1-800-266-1687 | mach@mpe-inc.com
 10597 W. Glenbrook Ct. Milwaukee, WI 53224 | 414-355-0310



PC HOLDERS

PC holders are adaptable to different sizes of computers. The width can be adjusted with two threaded knobs that can slide along two slots increasing or decreasing the containment space.

SPECIFICATIONS:



Adjustable knobs



PC Holder Kit, Small
2"-3"W

PC Holder Kit, Medium
3"-5"W

PC Holder Kit, Large
5"-7.5"W

Material:	Steel	Steel	Steel
Finish:	Powder coat	Powder coat	Powder coat
Assembly:	Attaches to column	Attaches to column	Attaches to column

	PART NUMBER	M-1	M-2	M-E	M-L	M-R
Small	1911113	✓	✓	✓		
Medium	1911109	✓	✓	✓		
Large	1911110	✓	✓	✓		

MODULAR | ADAPTABLE | CUSTOMIZABLE | FOR HEALTHCARE

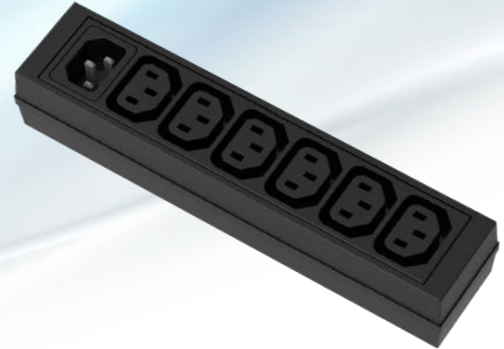
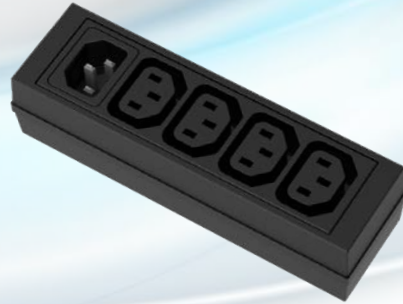
www.mpe-inc.com | 1-800-266-1687 | mach@mpe-inc.com
10597 W. Glenbrook Ct. Milwaukee, WI 53224 | 414-355-0310



POWER STRIP KITS

Standard IEC power strips come in 4 or 6 outlet plug-ins. These contribute to supreme cable management that allow multiple devices to be sourced from one power outlet. Keep plugged-in outlets out of sight by storing power strips inside the electrical box assembly where device cables are fed down from the column cable channel.

SPECIFICATIONS:



4 Outlet Power Strip

6 Outlet Power Strip

Physical Dimensions:

134.5mm W x 44mm D x 37mm H

225mm W x 29mm D x 40mm H

Ratings

Current:

10A

10A

Voltage:

100-250 VAC

100-250 VAC

Frequency:

50/60Hz

50/60Hz

Certifications:

RoHS compliant per Directive 2011/65/EU (RoHS II) and its amendment 2015/863/EU (RoHS III) REACH compliant per Regulation (EC) UL certified or recognized

RoHS compliant per Directive 2011/65/EU (RoHS II) and its amendment 2015/863/EU (RoHS III) REACH compliant per Regulation (EC) 1907/2006 UL certified or recognized

Material:

Housing, Thermoplastic, Black, UL 94V-0

Housing, Thermoplastic, Black, UL 94V-0

Appliance inlet/-outlet:

C14 acc. To IEC 60320-1, / F acc. To IEC 60320-3 UL 498 CSA C22.2 no. 42 (for cold conditions) pin-temperature 70 C, 10A, Protection Class I

C14 acc. To IEC 60320-1, / F acc. To IEC 60320-3 UL 498 CSA C22.2 no. 42 (for cold conditions) pin-temperature 70 C, 10A, Protection Class I

Assembly:

Can be attached along sides of columns or inside ebox

Can be attached along sides of columns or inside ebox

	PART NUMBER	M-1	M-2	M-E	M-L	M-R
4 Outlet Power Strip	1911093	✓	✓	✓		
6 Outlet Power Strip	1911111	✓	✓	✓		

MODULAR | ADAPTABLE | CUSTOMIZABLE | FOR HEALTHCARE

www.mpe-inc.com | 1-800-266-1687 | mach@mpe-inc.com
10597 W. Glenbrook Ct. Milwaukee, WI 53224 | 414-355-0310



TANK BRACKET KITS

Tank kits can secure compressed gas cylinders used in a variety of medical applications. Standard tank kits fit cylinder D & E sizes and can be mounted anywhere along the column. Tanks secured by a hook and loop strap. Polyethylene foam strips line the inside of bracket. Custom sizes available upon request.

SPECIFICATIONS:

SINGLE Tank Bracket Kit D & E Size:

- Physical Dimensions:** 4.7"W x 4"D x 12.89"H
- Material:** Steel
- Finish:** Powder coat
- Assembly:** Attached to column T-Nut slots



Dual Tank Bracket Kit D & E Size:

- Physical Dimensions:** 4.7"W x 4"D x 13.5"H
- Material:** Steel
- Finish:** Powder coat
- Assembly:** Attached to column T-Nut slots



	PART NUMBER	M-1	M-2	M-E	M-L	M-R
Single Column Tank Bracket Kit D&E	1911079	✓		✓		
Dual Column Tank Bracket Kit D&E	1911081		✓	✓		

MODULAR | ADAPTABLE | CUSTOMIZABLE | FOR HEALTHCARE

www.mpe-inc.com | 1-800-266-1687 | mach@mpe-inc.com
10597 W. Glenbrook Ct. Milwaukee, WI 53224 | 414-355-0310



STANDARD & LARGE DRAWER

Security and easy access to contents with self closing drawer slides. Two sizes, standard and large, attach directly under shelves enabling modular approach for storage space requirements. Plastic drawer face provides smooth and easy to clean surface.

SPECIFICATIONS:

MACH 1:

Physical Dimensions

Standard: 16.45"W x 14.30"D x 3.20"H

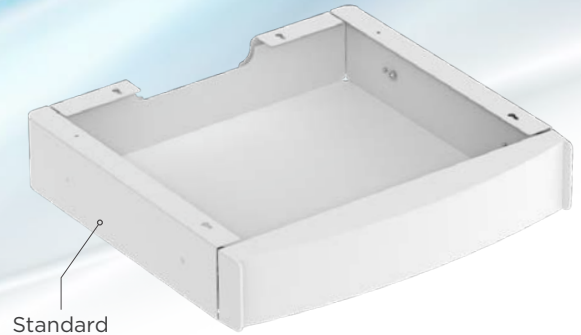
Large: 16.45"W x 14.30"D x 6.70"H

Load Capacity: 10 lbs.

Material: Steel

Finish: Powder coat

Assembly: Fully assembled drawer attaches to underside of shelf



MACH 2:

Physical Dimensions

Standard: 16.45"W x 16.93"D x 3.20"H

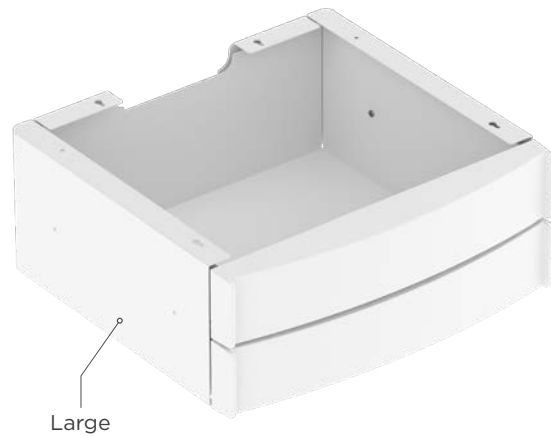
Large: 16.45"W x 16.93"D x 6.70"H

Load Capacity: 10 lbs.

Material: Steel

Finish: Powder coat

Assembly: Fully assembled drawer attaches to underside of shelf



	PART NUMBER	M-1	M-2	M-E	M-L	M-R
Standard MACH 1	1812015	✓				
Large MACH 1	1911074	✓				
Standard MACH 2	1904119		✓			
Double MACH 2	1911072		✓			

MODULAR | ADAPTABLE | CUSTOMIZABLE | FOR HEALTHCARE

www.mpe-inc.com | 1-800-266-1687 | mach@mpe-inc.com
10597 W. Glenbrook Ct. Milwaukee, WI 53224 | 414-355-0310

